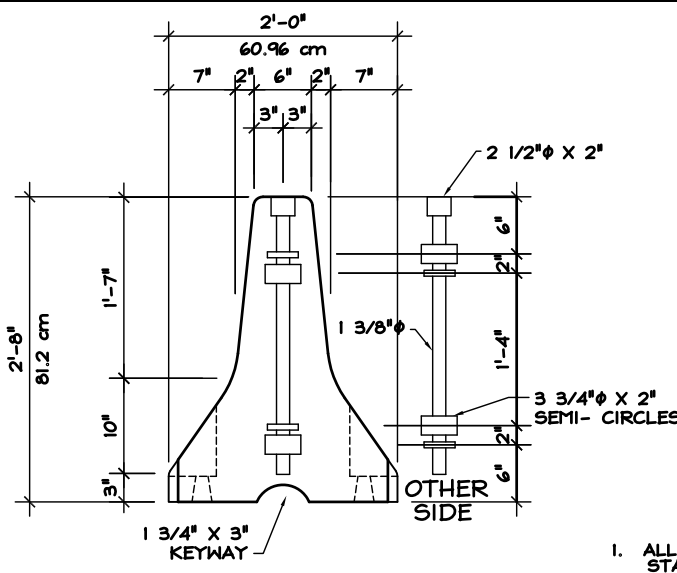
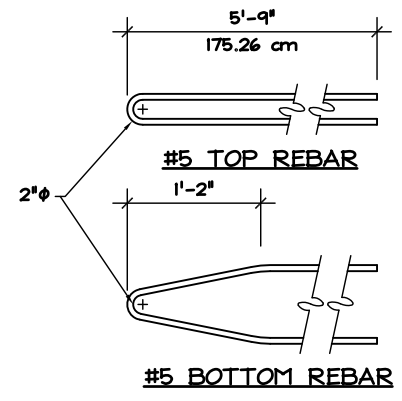


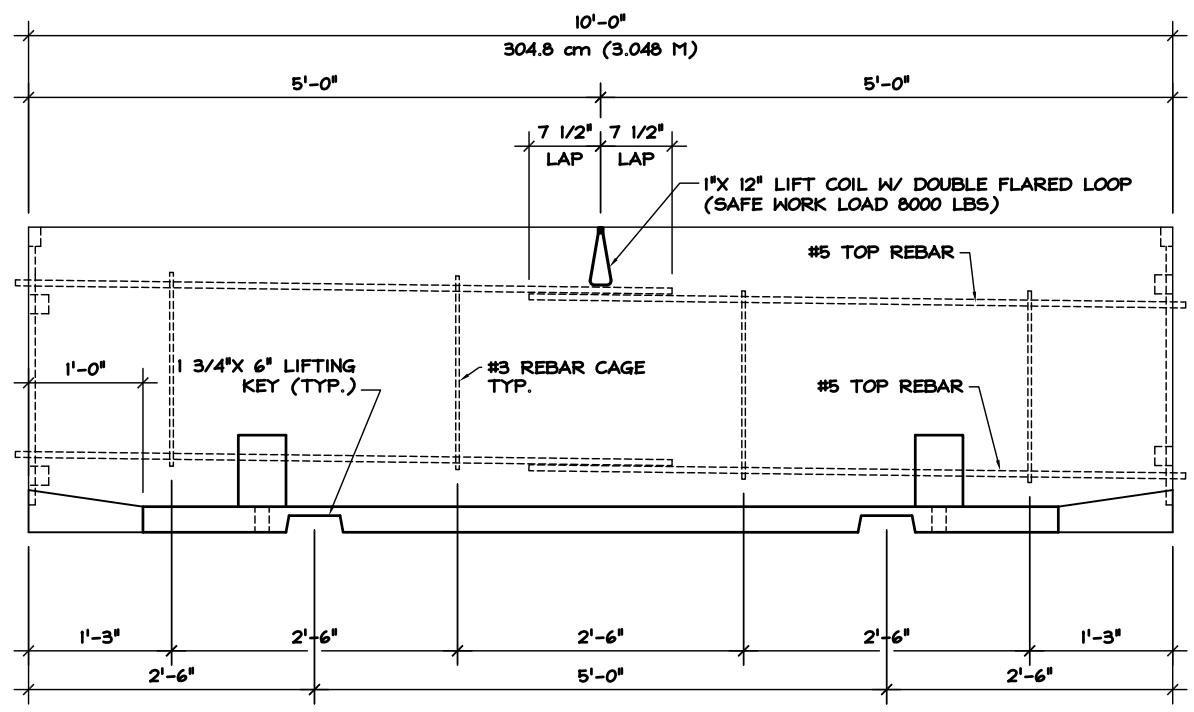
TRAFFIC
PLAN



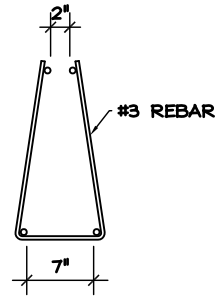
END



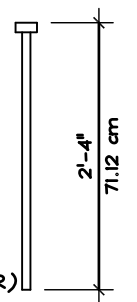
- GENERAL NOTES**
1. ALL WORK SHALL BE DONE IN ACCORDANCE WITH NEW MEXICO STATE HIGHWAY DEPARTMENT STANDARD SPECIFICATIONS
 2. CONCRETE SHALL BE CLASS "A" CONFORMING TO THE REQUIREMENTS OF SECTION 510 - PORTLAND CEMENT CONCRETE
 3. NUTS, WASHERS, LIFTING HARDWARE CONNECTING PINS, DRIFT PINS AND ANCHOR BOLTS SHALL BE GALVANIZED
 4. ALL EXPOSED LOOPS SHALL BE THOROUGHLY CLEANED AND PAINTED ACCORDING TO SEC. 545
 5. METRIC MEASUREMENTS ARE "SOFT"
IE: CONVERTING THE ENGLISH DIMENSIONS TO METRIC.
1"=2.54cm



ELEVATION



REBAR CAGE DETAIL



7/8"X28" WASHER
2 1/4" O.D. (REGULAR)

CONNECTING PIN

WEIGHT: 4000#

CONCRETE SPECIFICATIONS
3000 f'c 28-DAY COMPRESSIVE STRENGTH
4 1/2% - 7 1/2% ENTRAINED AIR
STEEL REINFORCING AS DETAILED
CLASS "A" CONCRETE (SECTION 510)

FORMS
SMOOTH SURFACE FIBERGLASS

COLORS
GREY
FINISHES
SMOOTH FORM AS CAST
FLOAT TO UNIFORM SURFACE - NO HUMPS OR RISES
APPROVED CURING COMPOUND/SEALER

CONTRACTOR RETAINED

MEDIAN BARRIER

ARCHITECTURAL PRECAST CONCRETE
MATERIALS, INC.