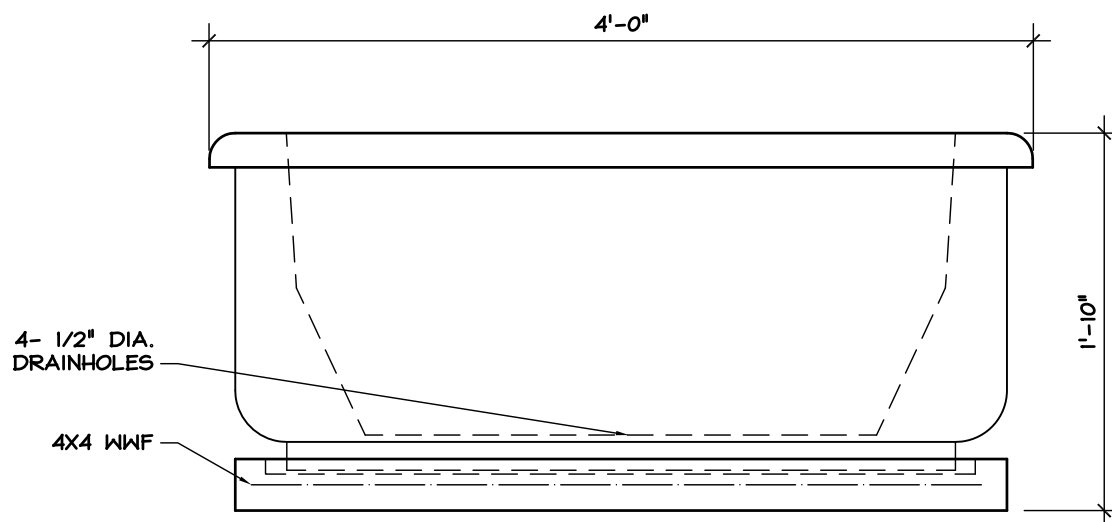


TOP

.39 CY CONCRETE
WEIGHT: 1595#
APPROX. CAVITY VOLUME
7 CU. FT.



ELEVATION

CONCRETE SPECIFICATIONS

4000 f'c 28-DAY COMPRESSIVE STRENGTH
4-7% ENTRAINED AIR
MILD STEEL REINFORCING AS REQUIRED
POLYPROPYLENE FIBER SECONDARY
REINFORCING

FORMS

SMOOTH SURFACE FIBERGLASS

COLORS

GREY OR INTEGRAL COLOR (COHILL COLOR
PIGMENTS AVAILABLE)

STANDARD FINISH

LIGHT SANDBLAST
CLEAR SEALER

SANTA FE PLANTER

PL-2248

ARCHITECTURAL PRECAST CONCRETE
MATERIALS, INC.