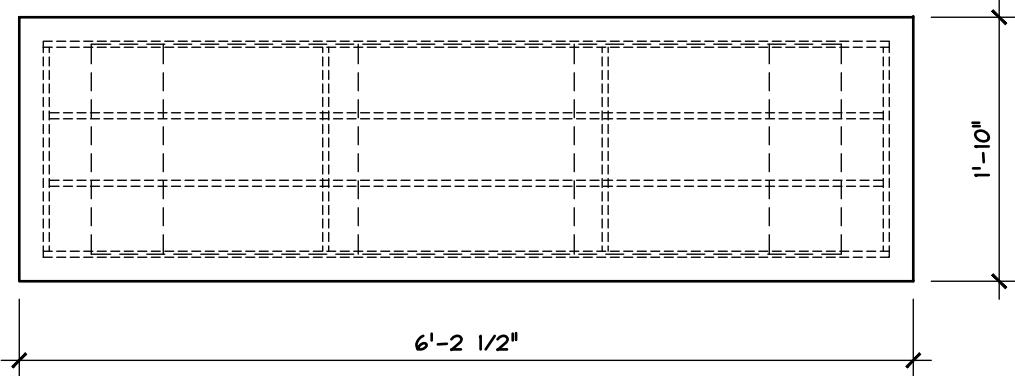
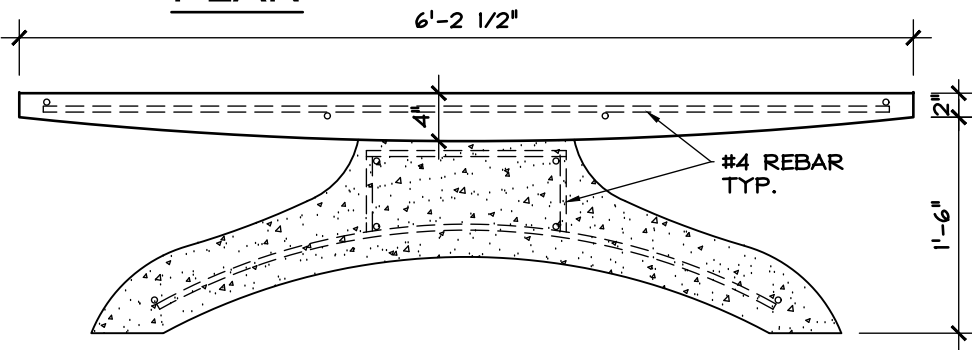


**BATL PART LIST:**

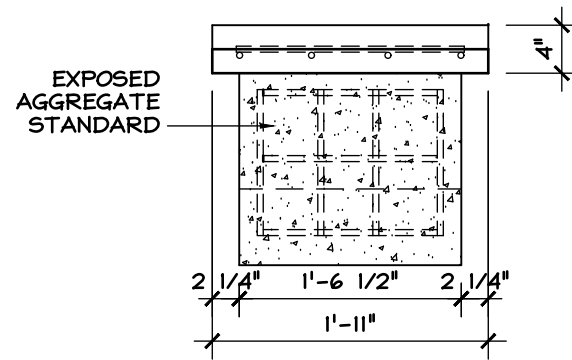
- |                              |                              |
|------------------------------|------------------------------|
| 1. 0.320 CU. YD CONCRETE     | 6. (4) #4 X 7 1/2"           |
| 1.1. APPROX. 1260 LBS        | 7. (4) #4 X 1'-5"            |
| 2. (4) #4 X 5'-10 1/2"       | 8. (1) 5/8" INSERT           |
| 3. (4) #4 X 1'-6"            | 9. (1) 5/8" X 11" ALL THREAD |
| 4. (6) #4 X 1'-3"            | 10. (4) 3/8" TREADED INSERTS |
| 5. (4) #4 X 4'-5 1/2" (BENT) | 11. (4) 3/8" LEVELING BOLT   |
|                              | 12. (4) #4 X 5'-10 1/2"      |



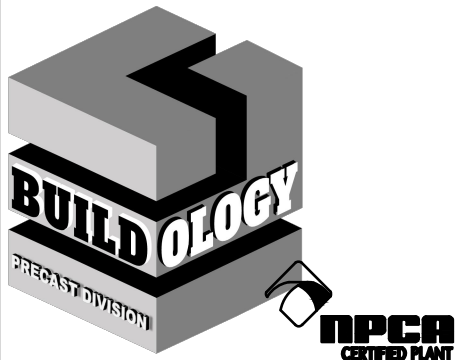
**PLAN**



**ELEVATION**



**END**



**SHEET NOTES:**

1. **CONCRETE SPECIFICATIONS**
  - 1.1. 5000 PSI COMPRESSIVE STRENGTH @ 28 DAYS
  - 1.2. 5%-8% ENTRAINED AIR
  - 1.3. POLYPROPYLENE FIBER
2. **REINFORCING SPECIFICATIONS**
  - 2.1. REBAR TO MEET ASTM A615, GRADE 60
3. **COLOR AND FINISH**
  - 3.1. GREY, WHITE, VARIOUS COHILLS COLORS
  - 3.2. **FINISH:**
    - 3.2.1. SMOOTH TOP
    - 3.2.2. EXPOSED AGGREGATE BASE
  - 3.3. **SEALER:**
    - 3.3.1. VOCOMP 20 ON TOP
    - 3.3.2. CS 309 ON BASE

SHEET TITLE: DIMENSION DETAIL

PRODUCT: ATLANTA BENCH

LOCATION:

CONTRACTOR:

ARCHITECT:

DATE:

SCALE: 3/4"=1'-0"

SHEET NO.: 1.0