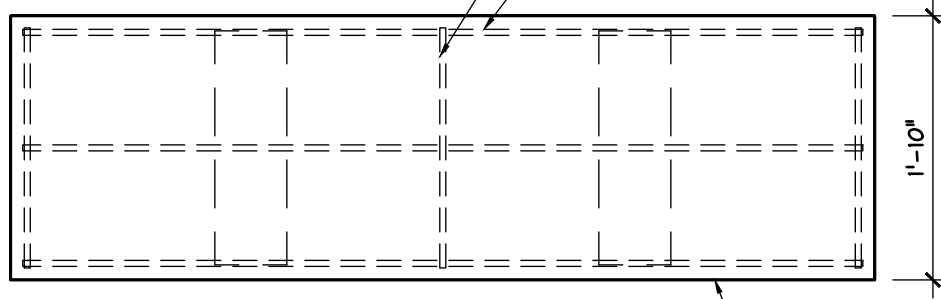


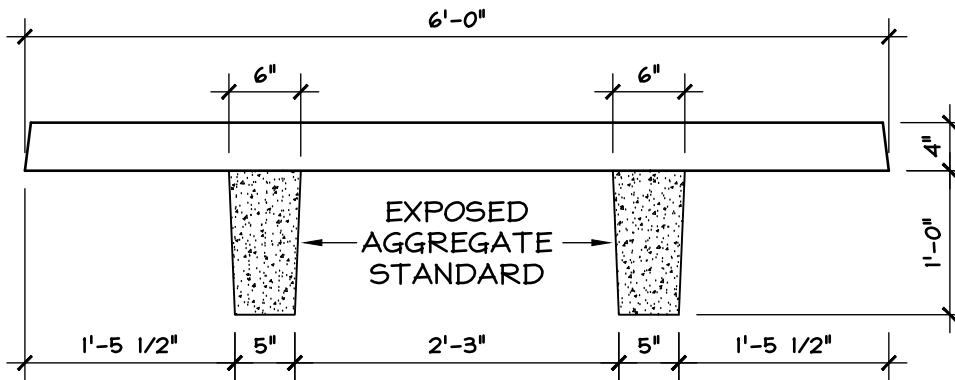
BENCH TOP TO LEG ATTACHMENT:
 (2) 5/8" BOLTS @ EA. LEG PLACED
 INTO 1" DIA. VOID IN LEGS FILLED
 WITH EPOXY

3-#4X20"
 EQ. SPACING
 3-#4X70"
 EQ. SPACING

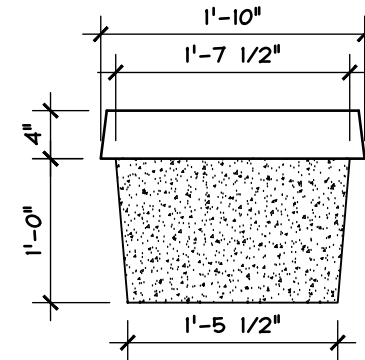


PLAN

ALL CORNERS
 1/4" R.



FRONT ELEVATION



SIDE ELEVATION

SHEET NOTES:

1. **CONCRETE SPECIFICATIONS**
 - 1.1. 5000 PSI COMPRESSIVE STRENGTH @ 28 DAYS
 - 1.2. 5%-8% ENTRAINED AIR
 - 1.3. POLYPROPYLENE FIBER
2. **REINFORCING SPECIFICATIONS (IF APPLICABLE)**
 - 2.1. REBAR TO MEET ASTM A615, GRADE 60
 - 2.2. WELDED WIRE MESH TO MEET ASTM A1064
3. **COLOR AND FINISH OPTIONS**
 - 3.1. GREY, WHITE, VARIOUS COHILLS COLORS
 - 3.2. BENCH TOP-SMOOTH, LEGS- EXPOSED AGG.
 - 3.3. SEALER: VOCOMP 20

BGO TH MAT'L LIST:

1. 0.192 CU.YD. CONCRETE
 - 1.1. APPROX. 750 LBS
2. (1) BENCH TOP
3. (2) BENCH LEGS
4. (4) 5/8" THIN SLAB
 THREADED INSERTS
5. (4) 5/8" DIA. X 1" BOLT
6. (1) TUBE OF EPOXY
7. (3) #4 X 70"
8. (3) #4 X 20"

SHEET TITLE: DIMENSION DETAIL

PRODUCT: GOTHIC BENCH

LOCATION:

CONTRACTOR:

ARCHITECT:

DATE:

SCALE: 3/4"=1'-0"

SHEET NO.: 1.0

