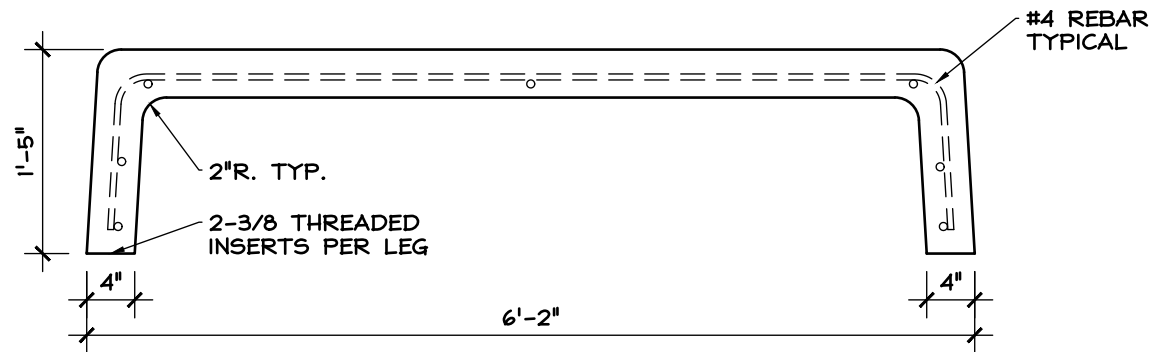
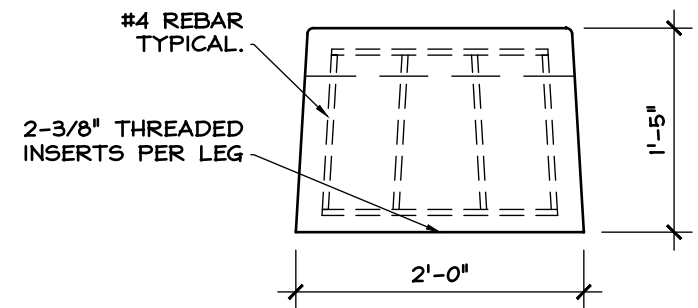


**PLAN**



**FRONT ELEVATION**



**SIDE ELEVATION**

**SHEET NOTES:**

1. **CONCRETE SPECIFICATIONS**
  - 1.1. 5000 PSI COMPRESSIVE STRENGTH @ 28 DAYS
  - 1.2. 5%-8% ENTRAINED AIR
  - 1.3. POLYPROPYLENE FIBER
2. **REINFORCING SPECIFICATIONS (IF APPLICABLE)**
  - 2.1. REBAR TO MEET ASTM A615, GRADE 60
  - 2.2. WELDED WIRE MESH TO MEET ASTM A1064
3. **COLOR AND FINISH OPTIONS**
  - 3.1. GREY, WHITE, VARIOUS COHILLS COLORS
  - 3.2. FINISH: SMOOTH
  - 3.3. SEALER: VOCOMP 20

**BTAOS MAT'L LIST:**

1. 0.186 CU.YD. CONCRETE
  - 1.1. APPROX. 725 LBS
2. (7) #4 X 1'-8"
3. (4) #8 BENT- 8'-0" LONG
4. (4) 3/8" THREADED INSERTS
5. (4) 3/8" LEVELING PEDESTAL

SHEET TITLE: DIMENSION DETAIL

PRODUCT: TAOS BENCH

LOCATION:

CONTRACTOR:

ARCHITECT:

DATE:

SCALE: 3/4"=1'-0"

SHEET NO.: 1.0

